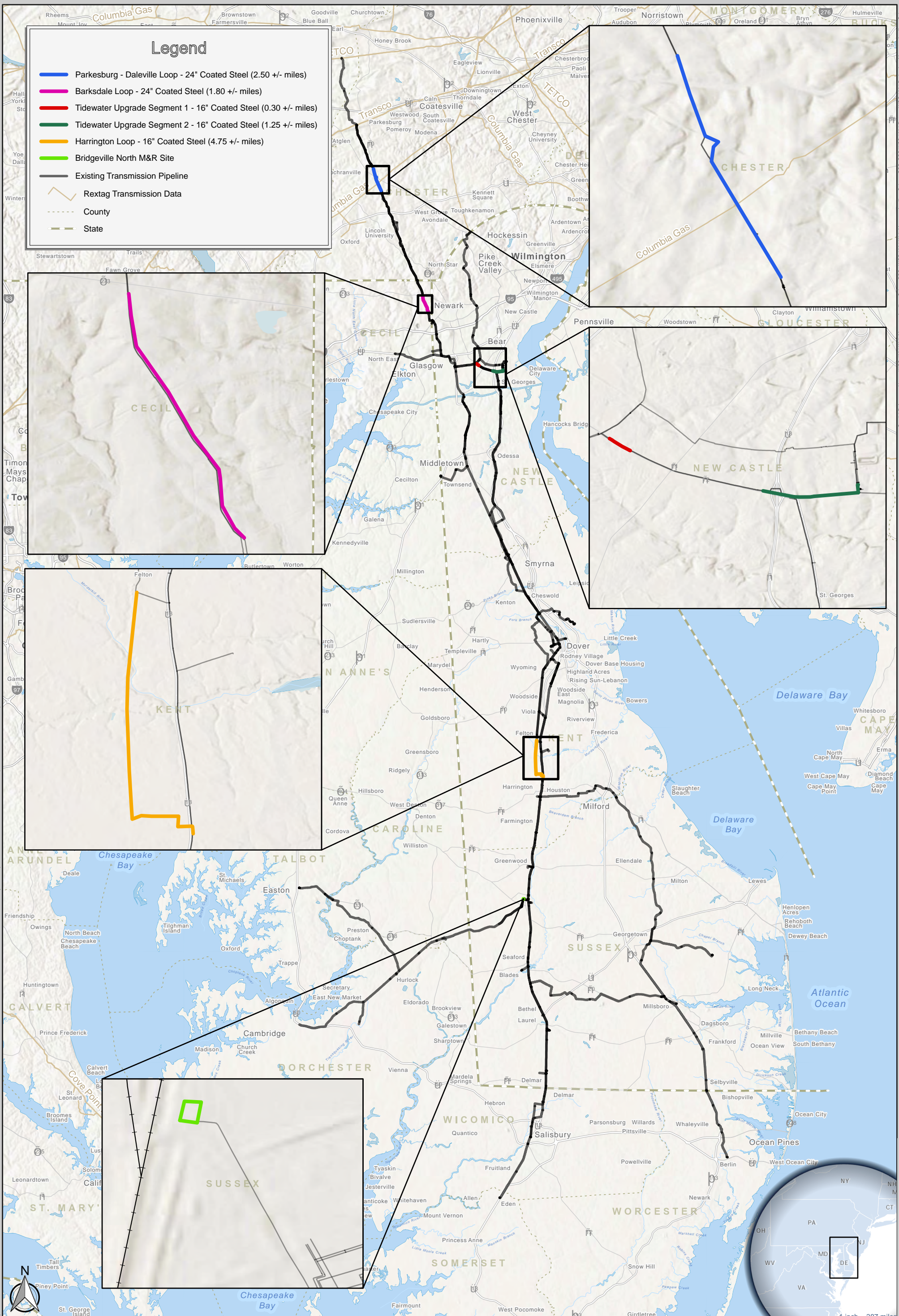
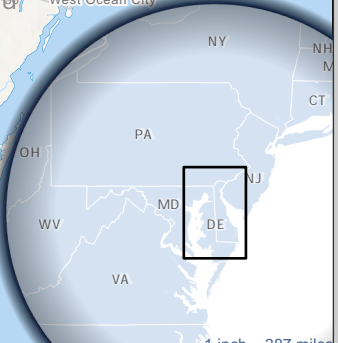
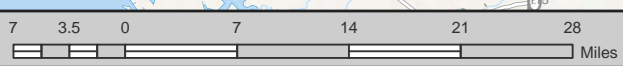


### Legend

- Parkesburg - Daleville Loop - 24" Coated Steel (2.50 +/- miles)
- Barksdale Loop - 24" Coated Steel (1.80 +/- miles)
- Tidewater Upgrade Segment 1 - 16" Coated Steel (0.30 +/- miles)
- Tidewater Upgrade Segment 2 - 16" Coated Steel (1.25 +/- miles)
- Harrington Loop - 16" Coated Steel (4.75 +/- miles)
- Bridgeville North M&R Site
- Existing Transmission Pipeline
- Rextag Transmission Data
- County
- State



1 inch = 12 miles  
Scale: 1:761,460



By: Bryan Bloch  
Orig. Created: 7/23/2025  
Last Updated: 7/24/2025  
Map: Layout  
Document: DRE Capital Committee Presentation  
Software: ArcGIS Pro

# Delmar Regional Enhancement Project

## Natural Gas Transmission

Chesapeake Utilities Corporation  
500 Energy Lane, Suite 200  
Dover, DE 19901  
302.736.7831 | [www.chpk.com](http://www.chpk.com)